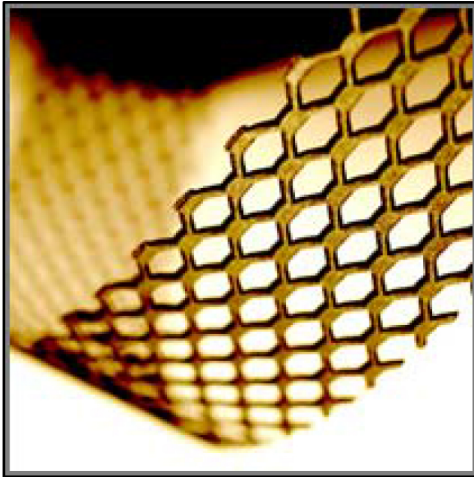


## RIBBON MESH ANODES DATA SHEET



Titanium Electrode Products Companies, "TELPRO," are manufacturers of mixed metal oxide anodes for cathodic protection.

**TELPRO RIBBON MESH Anodes** are manufactured using a titanium expanded mesh substrate, which meets ASTM B265 Grade 1 or Grade 2 standards, which has been coated with **TELPRO** Mixed Metal Oxide coating.

**TELPRO MMO** coating consists of IrO<sub>2</sub>/Ta<sub>2</sub>O<sub>5</sub> and is suitable for use in all cathodic protection applications. Because mixed metal oxide anodes have an extremely low consumption rate, the titanium substrate remains constant throughout the design life of the anode.

Based upon accelerated life testing, conducted by an independent laboratory, **TELPRO MMO** coating has been proven to be equivalent or superior to other mixed metal oxide coatings which are currently being used; a copy of this test report is available upon request.

### APPLICATIONS

STEEL REBAR IN CONCRETE
CANISTER ANODES
DECAY ELECTRODES

### MMO RIBBON MESH ANODE SPECIFICATIONS

RIBBON MESH WIDTH	10mm	13mm	15mm	20mm
CURRENT RATING @ 110mA/m <sup>2</sup>	2.8 mA/m	3.5 mA/m	3.9 mA/m	5.30 mA/m
EXPECTED LIFE	75 years in concrete			
CATALYST	Iridium / Tantalum Mixed Metal Oxide			
<b>MAXIMUM ANODE / CONCRETE INTERFACE CURRENT DENSITY:</b>				
FHWA LIMIT	110 mA/m <sup>2</sup>	SHORT TERM LIMIT		220 mA/m <sup>2</sup>
<b>NOMINAL DIMENSIONS</b>				
WIDTH	10 mm	13 mm	15 mm	20 mm
COIL LENGTH	100 m			
ANODE SURFACE PER UNIT LENGTH ANODE	0.025 m <sup>2</sup> /m	0.032 m <sup>2</sup> /m	0.036 m <sup>2</sup> /m	0.0482 m <sup>2</sup> /m
APPROX. EXPANDED THICKNESS	1.30 mm			
DIAMOND DIMENSIONS	2.5 x 4.6 x 0.6 mm			
SHIPPING WEIGHT	1.4 Kgs per	1.9 Kgs per 100m	2.85 Kgs per	3.8 Kgs per

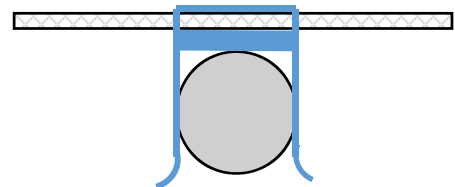
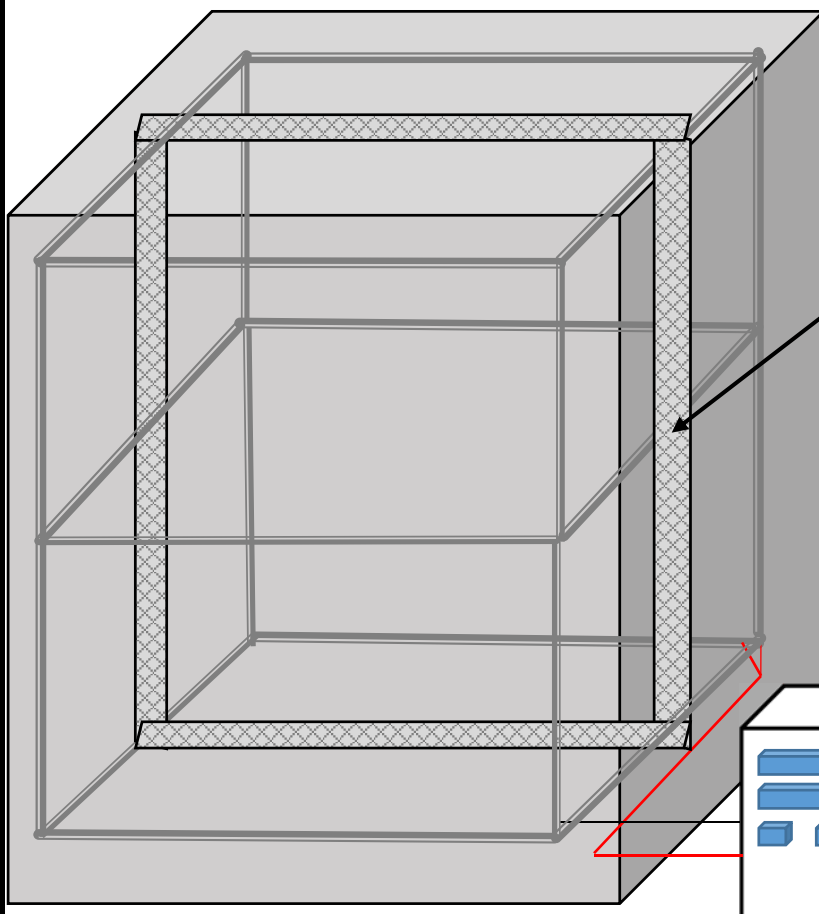
Distributed By:  
Interprovincial Corrosion Control Co. Ltd.  
930 Sheldon Court  
Burlington, Ontario L7L 5K6  
Telephone: (905) 634 7751  
Fax: (905) 333 4313  
Website: <http://www.Rustrol.com>

## RIBBON MESH ANODES DATA SHEET

SUBSTRATE				
COMPOSITION	Titanium to ASTM B265 Grade 1			
CURRENT DISTRIBUTOR				
WIDTH	12.7 mm			
THICKNESS	0.90 mm			
COIL LENGTH	100 m			
SHIPPING WEIGHT PER	5.2 Kgs			
ELECTRICAL PROPERTIES				
ANODE RIBBON MESH	0.5 Ohm/m	0.39 Ohm/m	0.375 Ohm/m	0.25 Ohm/m
CURRENT DISTRIBUTOR	0.049 Ohm/m			
<b>Lifetimes stated are nominal, we can supply Amps / life different to stated standards on request</b>				

Strict quality control procedures are followed throughout the entire coating process, to guarantee proper coating adhesion and loading. Also, **TELPRO** products are tested using an X-Ray Fluorescence Spectrometer, to ensure production of the highest quality product, which is fundamental in every step of the manufacturing process.

### TYPICAL APPLICATIONS FOR RIBBON MESH ANODES



RIBBON MESH IS ISOLATED FROM REBAR WITH CLIPS

RIBBON MESH ANODES FOR NEW BUILD AND EXISTING CONCRETE STRUCTURES. PROVEN METHOD OF STOPPING CORROSION AND PROLONGING LIFE OF THE STRUCTURE.

75 YEARS + ANODE LIFE CAN BE CONSIDERED

DESIGN IS "ZONED" IN DISCRETE SECTIONS TO PROVIDE CONTROL AND TO ENABLE ACCURATE MEASUREMENT OF SYSTEM PERFORMANCE