

PosiTest[®]

Pull-Off Adhesion Tester

Measures adhesion of coatings to metal, wood, concrete and other substrates – revolutionary self-alignment feature and pull rate indicator.



IP65



***Available
in 2 models...***

Manual or Automatic

DeFelsko[®]
The Measure of Quality

Measures the force required to pull a specified test diameter of coating away from its substrate using hydraulic pressure.

AT-A Automatic

Electronically controlled hydraulic pump automatically applies smooth and continuous pressure at a user-specified rate-of-pull

USB port for downloading

AC Adapter port charges batteries or powers instrument

Environmentally sealed, one-piece metal enclosure

Cutting tool for isolating test area

Single-use, self-aligning dollies ensure even, consistent pull-offs

Reach difficult areas with 5 ft (1.5 m) quality flex hose

Self-aligning, quick-coupling secures dollies to actuator

Both Models Feature...

Simple

- Portable – requires no external power source – ideal for lab and field use
- Pull Rate Indicator allows operator to easily monitor and adjust the rate of pull in accordance with international test methods
- Easily select dolly sizes, change measurement units or store readings, with the touch of a button
- Conversion charts not required – tester automatically calculates pressure based on dolly size
- Inexpensive, single-use dollies eliminate cleaning for re-use and can be kept as a permanent record
- Each kit comes with everything needed for testing

Durable

- Environmentally sealed enclosure – weatherproof, dustproof and shockproof – meets or exceeds IP65
- Can be used in any position
- Rugged carrying case
- Two year warranty

Accurate

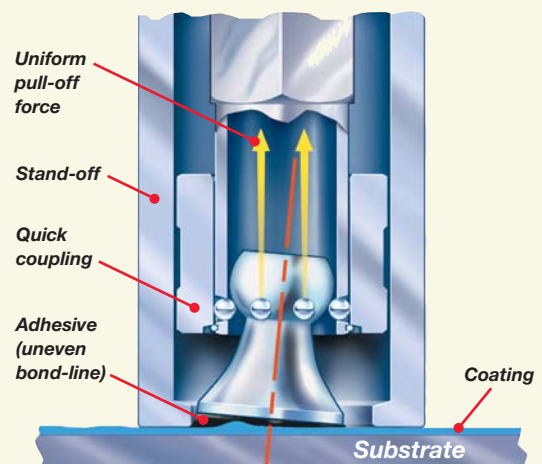
- Every PosiTest Adhesion Tester pressure system is calibrated and certified to $\pm 1\%$ accuracy using NIST traceable load cell
- Self-aligning aluminum dolly enables accurate measurements on smooth or uneven surfaces
- Hi-grade, industrial pressure sensor ensures continued accuracy
- Conforms to national and international standards including ASTM D4541/D7234, ISO 4624/16276-1, AS/NZS 1580.408.5 and others

Versatile

- Internal Memory stores maximum pull-off pressure, rate of pull, test duration and dolly size for up to 200 pulls
- Optional PosiSoft® software available for downloading
- 10, 14, 20 or 50 mm dollies maximize capability and measurement resolution across a wide range of bond strengths
- LCD displays pressure value in psi or MPa

Self-Alignment Feature

The PosiTest Adhesion Tester compensates for misalignment. The self-aligning, quick-coupling actuator and spherical articulating dolly head enable uniform distribution of the pulling force over the surface being tested, preventing a one-sided pull-off.



PosiTest® **AT-M Manual** Adhesion Tester



AT-M Manual

- Heavy-duty manual hydraulic pump designed to apply smooth and continuous pressure with a single stroke
- Pull Rate Indicator to manually monitor and adjust the rate of pull

PosiTest® **AT-A Automatic** Adhesion Tester

- Electronically controlled hydraulic pump automatically applies smooth and continuous pull-off pressure at a user-specified rate
- Test with the simple push of a button. No twisting, pumping or cranking. No valves to close, needles to reset, or scales to adjust
- User selectable pull rates ensure compliance with international test methods for a variety of industries including metal, wood and concrete
- Built-in rechargeable batteries perform over 200 tests per charge. Continue testing with AC power while batteries recharge. Supplied with universal AC Adapter



AT-A Automatic
Rugged, portable instrument ideal for lab and field use

This diagram provides a detailed view of the LCD screen and control buttons of the PosiTest AT-A Automatic Adhesion Tester. The screen displays a large digital reading of '1457' in blue digits on a green background. Above the main display, there are two rows of numbers: the top row shows '0 0.25 0.5 0.75 1.0 1.25 MPa/s' and the bottom row shows '0 50 100 150 200 psi/s'. A yellow bar highlights the '1.25 MPa/s' and '200 psi/s' values. A red dot on the screen indicates the 'Pull Rate indicator'.

Callouts and labels include:

- Low battery indicator**: Points to a small icon in the top left corner of the screen.
- Memory mode icon indicates readings are in memory**: Points to a small icon in the top left corner of the screen.
- Select measurement units**: Points to a button labeled 'psi/MPa'.
- Select dolly size**: Points to a button with a dolly icon.
- Select Pull Rate in accordance with international test methods**: Points to a button with a bar graph icon.
- One-touch save feature stores and reviews readings in memory**: Points to a button with a floppy disk icon.
- On/Start**: Points to a green button with a vertical bar icon.
- Off/Stop**: Points to a red button with a square icon.
- Pull Rate indicator to easily set and monitor the specified rate of pull**: Points to the yellow bar on the screen.
- Large, easy-to-read LCD displays pressure during measurement and holds maximum value**: Points to the large digital display.

At the bottom of the screen, the text reads: **PosiTest AT-A Automatic Adhesion Tester**.



Specifications

Dolly Size (mm)*	20 mm
Resolution	1 psi (0.01 MPa)
Accuracy	± 1% Full Scale
Adhesion Strength**	0 – 3000 psi (0 – 20 MPa)

*Additional dolly sizes available to meet specific measuring needs – contact supplier for details. **Varies with dolly size

Both Kits include: Adhesion tester with digital display, built-in rechargeable NiMH batteries with charger, 20 mm aluminum test dollies (20), abrasive pad, cutting tool, adhesive with mixing sticks and palettes, cotton swabs, instruction booklet and video, Certificate of Calibration traceable to NIST, two-year warranty, and sturdy, lightweight carrying case

Kit Weight (with case): 13 lbs / 6 kg

Carrying Case Dimensions: L – 17 in / 43 cm x W – 13 in / 33 cm x H – 6 in / 15 cm

Options



50 mm Accessory Kit

- Ideal for lower bond strength finishes such as coatings on wood, concrete and plastic
- Larger surface area of dolly provides improved low range precision and repeatability
- Range 0 – 500 psi (0 – 3.5 MPa)
- Includes 50 mm stand-off, 50 mm hole saw and 50 mm aluminum test dollies (12)

Drilling Template for 20 mm and 50 mm Dollies

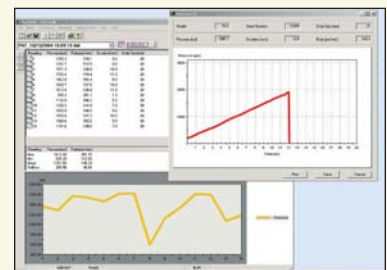
- Drilling template and drill bits to isolate test area, ideal for thicker coatings on concrete

Adhesive Kit

- Additional adhesive, mixing sticks, palettes and cotton swabs

PosiSoft® for Windows® analysis software

- Displays pressure, rate, test duration and dolly size for up to 200 pulls
- Calculates max, min, mean and standard deviation
- Prints and displays basic charts and histograms
- Real time graphing of individual pulls for a more detailed analysis of applied pressure over time (AT Manual only)
- Allows entry of notes and annotations
- Exports to a document or spreadsheet
- Multi-language support including English, German, Italian, Spanish and French
- Includes USB cable
- Free updates



Dollies

- Additional supplies of 10, 14, 20 and 50 mm dollies



DeFelsko®
The Measure of Quality

Distributed by:
Interprovincial Corrosion Control Co. Ltd.
930 Sheldon Court
Burlington, Ontario L7L 5K6

Telephone: (905) 634 7751
Fax: (905) 333 4313
Website: www.Rustrol.com

