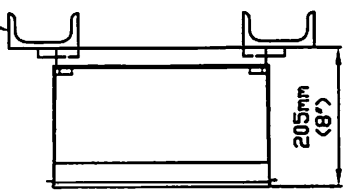
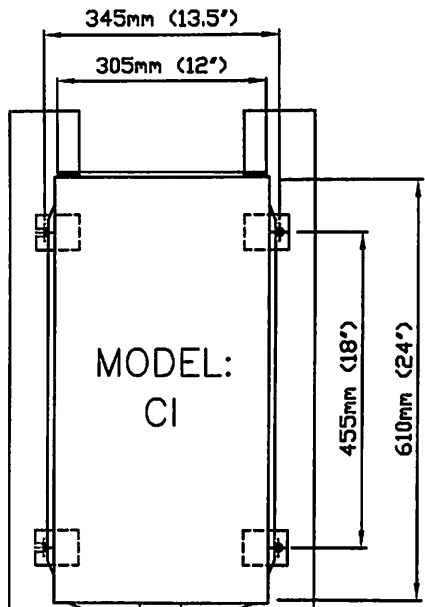


6 STEEL "C" CHANNEL  
(EXTERIOR COATING RECOMMENDED)



6

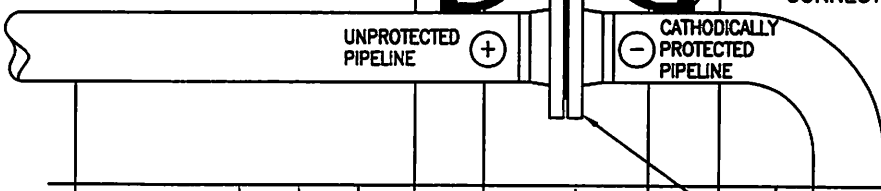
CABLE LENGTH NOT TO EXCEED 2 METRES OF CABLE IN EITHER DIRECTION TO AND FROM THE CATHODIC ISOLATOR®



CABLE TERMINATION

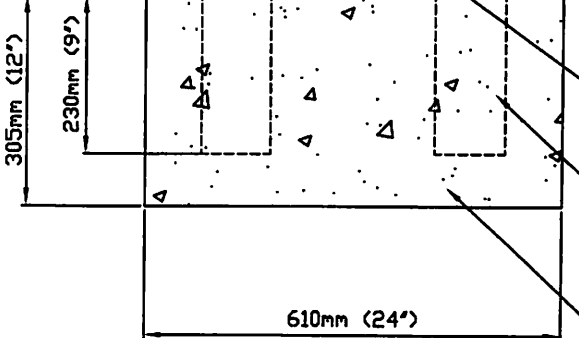
INSULATED AWG STRANDED COPPER CABLE (ICCC RECOMMENDS TWO (2) CABLES PER TERMINAL)

6 TYPICAL CABLE CONNECTION (ICCC RECOMMENDS THE END USER TO COAT THE CONNECTION)



6 1525mm (60 inches) APPROXIMATE EYE LEVEL

ELECTRICAL UTILITIES GROUNDING NETWORK



ISOLATING FLANGE ASSEMBLY OR MONOLITHIC ISOLATING JOINT

SUPPORT CHANNEL TO BE EMBEDDED INTO THE CONCRETE PAD

INSTALL CONCRETE PAD ON SITE

NOTES:

- Not drawn to scale
- All dimensions are shown in both metric & imperial units and are governed by the imperial measurements as shown
- While published statements are believed to be accurate, they are offered as suggestions only. Any use thereof is at the user's independent discretion.

TYPICAL INSTALLATION OF RUSTROL®  
CATHODIC ISOLATOR® SYSTEM MODEL: CI

no.	date	by	revision	chk'd by	date
0					FEB 23/2006
1					designed
2					w.B.R.
3					detailed
4					M.A.
5	FEB 23/2006	M.A.	NOTES REVISED		
6	MAY 4/2007	M.A.	CHANGES AS NOTED		checked
					w.B.R.

**INTERPROVINCIAL CORROSION CONTROL COMPANY LIMITED**  
 930 Sheldon Court  
 Burlington Ontario Canada  
 Ph: (905) 634-7751 Fax: (905) 333-4313  
 Copyright 2007

title	
CATHODIC	ISOLATOR®
isolator	cathodic
MODEL: CI	
drawing no.	rev.
CI-01	6