

# DRYCONN®

## WATERPROOF CONNECTORS

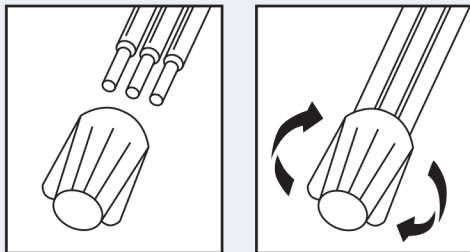
Filled Connectors for Direct Bury Use



### INSTALLATION INSTRUCTIONS

**IMPORTANT:** Turn off power before installing or removing connector. Product to be used in accordance with local and national codes.

1. Strip wires 5/8" (15.9mm).
2. Align any frayed strands or conductors.
3. Pre-twisting unnecessary. Place stripped wires together with ends of insulation even.
4. Twist connector onto wires pushing firmly until hand-tight. Do not over torque.
5. Wipe sealant in and around conductors and connector opening while tightening. Do not reuse.



### NEC Required for Outdoor Connections

Selected 600V Wire Combinations  
For use with solid and/or stranded combinations.

|                                  |                             |                                 |
|----------------------------------|-----------------------------|---------------------------------|
| 1-3 #10                          | 1 #10 w/1-3 #14             | 1 #14 w/3-4 #18                 |
| 1-4 #12                          | 1 #10 w/1-5 #16             | 2 #14 w/2-4 #16                 |
| 2-5 #14                          | 1 #12 w/1-4 #14 or #16      | 1 #8 w/1 #12                    |
| 4-6 #16                          | 1 #12 w/2-4 #18             | 5 #14 w/1 #18                   |
| 3 #14 w/1-2 #16, #18, #20 or #22 | 2 #12 w/1-2 #14, #16 or #18 | 1 #8 w/1-2 #16, #18, #20 or #22 |
| 3 #12 w/1 #14                    |                             |                                 |

Contact factory for a complete list of wire combinations at 800.633.0232.

**KING**  
INNOVATION®

50100-04 REV J 08/18

### Large Direct Bury\* Waterproof Connectors

| Catalog # | Selling Unit |
|-----------|--------------|
| 10600     | Card of 2    |
| 10666     | Bag of 10    |
| 10670     | Box of 100   |

### PRODUCT SPECIFICATIONS & MEASUREMENTS

Max. Voltage: 600V max. building wire  
(1000V max. signs or luminaires)

Connector Size: 2" x 13/16"

Wire Type: Copper/Copper

Wire Range: Min #22/Max #8

Temperature Rating: 105°C (221°F)

Silicone Sealant Temperature: -45°F to 400°F

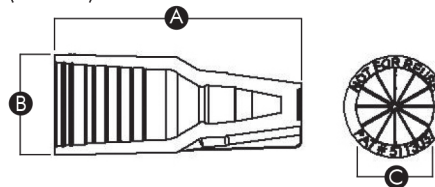
UL Designation: MDB

Measurements (Inches):

A - 2.00

B - 0.81

C - 0.62



UL Listed as a Sealed Wire Connector. For use in dry, damp, wet locations below or above grade when used in an enclosure. \*For use in direct bury applications when operating at 30 volts or less.



**MADE IN USA**

Distributed By:  
Interprovincial Corrosion Control Co. Ltd.  
930 Sheldon Court  
Burlington, Ontario L7L 5K6  
Telephone: (905) 634 7751  
Fax: (905) 333 4313  
Website: <http://www.Rustrol.com>