

DRYCONN®

WATERPROOF CONNECTORS

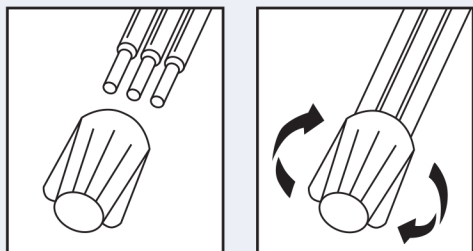
Filled Connectors for Direct Bury Use



INSTALLATION INSTRUCTIONS

IMPORTANT: Turn off power before installing or removing connector. Product to be used in accordance with local and national codes.

1. Strip wires 5/8" (15.9mm).
2. Align any frayed strands or conductors.
3. Pre-twisting unnecessary. Place stripped wires together with ends of insulation even.
4. Twist connector onto wires pushing firmly until hand-tight. Do not over torque.
5. Wipe sealant in and around conductors and connector opening while tightening. Do not reuse.



NEC Required for Outdoor Connections

Selected 600V Wire Combinations
For use with solid and/or stranded combinations.

1-3 #10	1 #10 w/1-3 #14	1 #14 w/3-4 #18
1-4 #12	1 #10 w/1-5 #16	2 #14 w/2-4 #16
2-5 #14	1 #12 w/1-4 #14 or #16	1 #8 w/1 #12
4-6 #16	1 #12 w/2-4 #18	5 #14 w/1 #18
3 #14 w/1-2 #16, #18, #20 or #22	2 #12 w/1-2 #14, #16 or #18	1 #8 w/1-2 #16, #18, #20 or #22
3 #12 w/1 #14		

Contact factory for a complete list of wire combinations at 800.633.0232.

KING
INNOVATION®

Large Direct Bury* Waterproof Connectors

Catalog #	Selling Unit
10600	Card of 2
10666	Bag of 10
10670	Box of 100

PRODUCT SPECIFICATIONS & MEASUREMENTS

Max. Voltage: 600V max. building wire
(1000V max. signs or luminaires)

Connector Size: 2" x 13/16"

Wire Type: Copper/Copper

Wire Range: Min #22/Max #8

Temperature Rating: 105°C (221°F)

Silicone Sealant Temperature: -45°F to 400°F

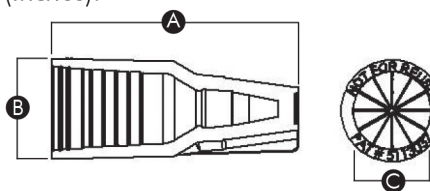
UL Designation: MDB

Measurements (Inches):

A - 2.00

B - 0.81

C - 0.62



UL Listed as a Sealed Wire Connector. For use in dry, damp, wet locations below or above grade when used in an enclosure. *For use in direct bury applications when operating at 30 volts or less.



MADE IN USA

Distributed By:
Interprovincial Corrosion Control Co. Ltd.
930 Sheldon Court
Burlington, Ontario L7L 5K6
Telephone: (905) 634 7751
Fax: (905) 333 4313
Website: <http://www.Rustrol.com>