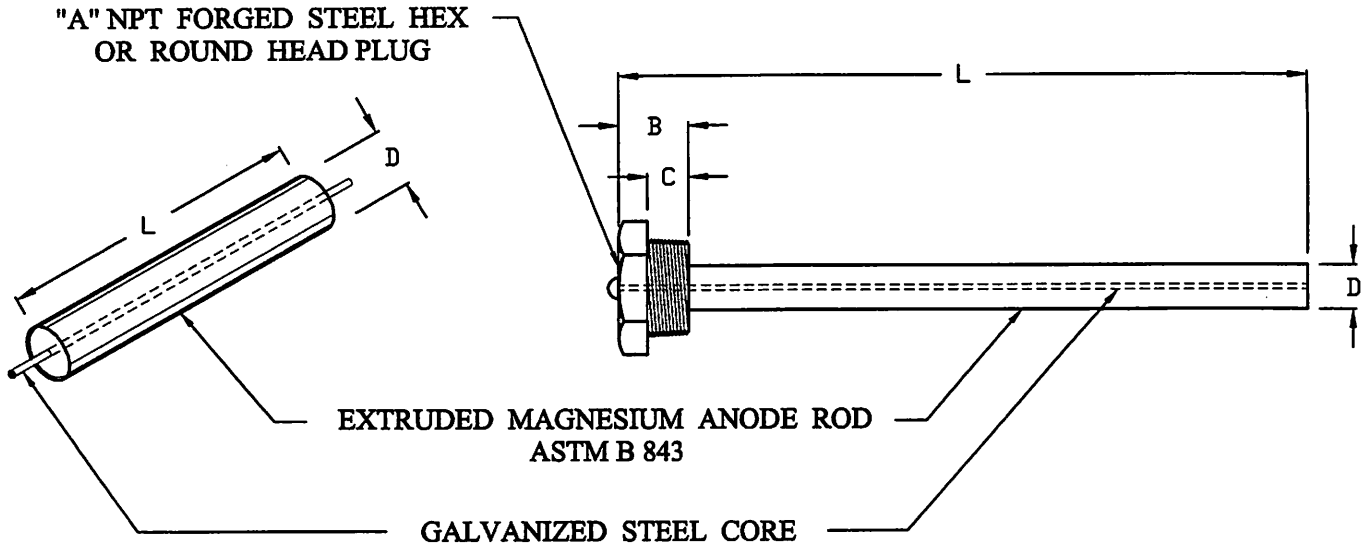


INTERPROVINCIAL CORROSION CONTROL COMPANY LIMITED *(Since 1957)*

930 SHELDON COURT, BURLINGTON, ONTARIO
Regional Offices: Calgary, Alberta & Montreal, Quebec
TEL: (905) 634-7751 CENTRAL FAX: (905) 333-4313
www.Rustrol.com



EXTRUDED MAGNESIUM ANODES FOR WATER TANKS

ICCC PRODUCT CODE	DIMENSIONS							
	D		L	A	B		C	
	INCHES	mm			INCHES	mm	INCHES	mm
EMR-1001	0.500	12.70	PER CUSTOMER REQUEST	1/4"-18 NPT	0.81	20.55	0.63	16.00
EMR-1002	0.675	17.15		3/8"-18 NPT	0.87	22.10	0.63	16.00
EMR-1003	0.700	17.80		3/8"-18 NPT	0.87	22.10	0.63	16.00
EMR-1004	0.750	19.05		3/8"-18 NPT	0.87	22.10	0.63	16.00
EMR-1005	0.840	21.35		3/4"-14 NPT	1.13	28.70	0.75	19.00
EMR-1006	0.840	21.35		1"-14 NPT	1.19	30.25	0.81	20.55
EMR-1007	1.050	26.65		1"-11 1/2 NPT	1.19	30.25	0.81	20.55
EMR-1008	1.050	26.65		1 1/4"-11 1/2 NPT	1.38	35.05	0.85	21.60
EMR-1009	2.024	51.40		2"-11 1/2 NPT	1.81	45.95	1.10	27.95

All dimensions are governed by Imperial Measurement
Magnesium Alloy, conforming to ASTM B 843 *(Latest edition)*: - Regular Potential - Grade AZ31B
- High Potential - Grade MIX

- Optional configuration for ICCC extruded magnesium anodes rods:
- Flush both ends
 - Threaded at one or both ends
 - Fitted with a NPT forged steel plug at one end, hex or round as specified by End User
 - Exposed steel core at one or both ends
 - Anode lead wire silver soldered to exposed steel core

DATE	DETAILED	CHECKED	DWG. NO.	REV.
DEC 7, 2009	M.A.	C.O.	PD-27	0